



The National New Deal Preservation Association

Lessons from the New Deal – A blueprint for renewing American prosperity and ingenuity

New Deal Photos Available for Community Exhibits



NNDPA

P.O. Box 602
Santa Fe, NM 87504

P. (505) 473-3985

C. (505) 690-5845

newdeal@cybermesa.com

www.newdeallegacy.org



MADE IN AMERICA



New Mexico was one of the most

active states during the New Deal era, particularly in the arts. NNDPA has assembled an impressive library of photographs of public art work created by New Mexico's talented New Deal artists and photographers. Framed reproductions of these valuable artistic pieces of New Mexico History are available for a 3-month rental for community display and enjoyment. After all, New Deal Art is uniquely American.

There are some 90 known NM communities that have their own New Deal public art and/or buildings, but many times these creations go unnoticed or are taken for granted. Having our photo exhibit in such a community can bring new awareness to each town's own New Deal treasures. In addition, the exhibit provides an ideal venue for a variety of community events, as well as an opportunity for the participation of other groups and businesses in the area.

SCROLL DOWN to view the catalog of photographs. To arrange an exhibit, contact our office. Additional information follows

Kathryn Flynn
Executive Director





New Deal Photographs Exhibit Rental Information

Any group interested in sharing the beauty of this public art legacy and who can assume responsibility for it while it is under their auspices, is invited to host the photo exhibit. This includes libraries, schools, learning centers, community groups, history buffs, senior citizen centers and local civic organizations, as well as local banks and businesses with New Deal connections. The rental fee is \$150.00 for a three-month showing in an appropriate local community building of your choice.

You Select Photos from our Collection

All available photos can be viewed on our website (under Merchandise). You customize your New Deal photo exhibit by selecting the photos you want based on the subject matter and the space you have available. Currently there are over 130 color images of murals, paintings and sculptures in our library. Each framed image is 15" x 18" in size. Included with the photos are various other signage about the New Deal and its significance in America's history.

Our library also includes 28 black and white photos that are reproductions of the work done by the Farm Security Administration (FSA), a national New Deal program, including New Mexico. They are framed 11" x 14" images done by Dorothea Lange and John Collier, Jr. primarily focusing on the people and their living conditions. These images can be a separate exhibit or used as a compliment to the color photos.

To Arrange for the Exhibit

We will meet with you to help you assemble the photos, their labels, and other signage that suits your purposes. Then, we will work with you on transportation and other logistics such as scheduling the dates, the publicity involved, supporting material we have available, and other specific arrangements. In addition, NNDPA can offer an overall perspective should your group desire a speaker at the opening of the exhibit, or during its showing.

To make your exhibit more successful, collaboration with other community groups is strongly encouraged. Some of the public buildings in your town may have New Deal furniture, interior tinwork, chandeliers, and other items to show off. Banks have a New Deal program in the form of F.D.I.C., and in rural areas, the REA – rural electric cooperatives – is another New Deal program that still serves its area. These are just two suggestions.

Just contact us to set up a meeting: (505) 473-3985 or (505) 690-5845 newdeal@cybermesa.com

Photos are numbered according to our in-house cataloguing system. Not all the numbers are in sequence. Please refer to the assigned numbers when selecting the desired photographs for special exhibits and/or purchase.



2

"The Resurrection"
 Patriciño Barela (1908-1964)
 Cottonwood carving, 1930s
 20.25" x 10.5" x 6.75"
 Museum of Fine Arts & Museum of International Folk Art – Santa Fe, NM



3

"Shiprock"
 Erik Barger (whereabouts unknown)
 Oil on board, 1930s, 22" x 29.5"
 Octavia Fellin Public Library – Gallup, NM



4

"South Second"
 Howard A. Barton (1907-1992)
 Oil on board, 1939, 24" x 30"
 UNM Fine Arts Gallery – Albuquerque, NM



5

"Taking Down Finished Rug"
 Harrison Begay (1914-2007)
 Casein, 1930s, 7.25" x 8.5"
 Octavia Fellin Public Library – Gallup, NM



6

"Hill Near Chama"
 Jozef Bakos (1891-1977)
 Casein on canvas, 1939
 NM Tech University – Socorro, NM



7

"Old Maxwell Mansion"
 Charles Berninghaus (1905-1988)
 Oil on canvas, 1930s, PWAP, 58" x 70"
 Arthur Johnson Public Library – Raton

"Untitled" PWAP
 Oscar Berninghaus (1874-1952)
 Oil on canvas, 1930s, 58" x 70"
 Raton City Hall – Raton, NM

8



"Old Hunter"
 Emil J. Bisttram (1895-1976)
 Oil on canvas, 1930s
 Albuquerque Museum – NM

9



10

"Justice Tempered with Mercy"
 Emil J. Bisttram (1895-1976)
 Mural, Oil on canvas, 1937
 Old US Federal Courthouse – Albuquerque, NM



11

"Juanita"
 Emil J. Bisttram (1895-1976)
 Oil on canvas, 1930, 44" x 34"
 Albuquerque Museum – NM



12



13



14

"Portfolio of Spanish Colonial Design in New Mexico"

Elizabeth "E." Boyd (1903-1974) 12 – Plates 37, 38 • 13 – Plates 41, 47 • 14 – Plates 31, 34 – 1938
 Multiple sites in NM Part of 250 sets of fifty watercolor renderings included in the National Index of American Design



15

“The Jicarilla Apache Trading Post”
LaVerne Nelson Black (1887-1938)
Oil on canvas, 1930s, 42” x 50”
Carlsbad Museum & Art Center – NM



16

“Roswell Art Center”
Manville Chapman (1903-1978)
Woodblock, 1937 – Used for opening
of Center in 1937 & again on its 50th
Anniversary in 1987
Roswell Museum and Art Center – NM

(This art center was one of
four created in NM under New
Deal funding, and is one of two
known in the nation that
has remained open since their
beginning).



21

“Christmas Eve, Taos Pueblo”
Regina Tatum Cooke (1902-1988)
Oil, 1930s Originally at Clayton School
“WPA Museum” – Clayton, NM. In 2014
collection moved to Herzstein Museum.
The school buildings are also a New Deal
creation.



17

“Cheyenne Village, 1845”

“Maxwell’s Mansion, 1865”



18

“Wooton Toll-Gate, 1868”

“Willow Spring Ranch, 1870”

Manville Chapman (1903-1978)
Oil on canvas, 1935, 23” x 78” or 65”
Shuler Theater Lobby – Raton, NM



19

“Raton’s First Street, 1893”

“Blossburg Mine, 1895”



20

“Clifton Station, 1875”

“Elizabeth Town, 1895”



22

“The Windmill”
Pedro “Pete” L. Cervantez (1914-1987)
Tempera on masonite, 1938, 26” x 17”
Melrose Public School Library – Melrose, NM



23

“Rancho de Taos Church”
Regina Tatum Cooke (1902-1988)
Oil, 1930s
Arthur Johnson Memorial Library – Raton, NM



24

“Conchas Dam Construction”
Odon Hullenkremer (1888-1978)
Oil, 1937 Conchas Dam Site, NM
Restored by NNDPA



"Street in Taos"
Regina Tatum Cooke
Herzstein Museum – Clayton, NM

25



"Tin Chandeliers, Furniture"
Edward Delgado (1883-1966)
1930s Original site – Cannon Air Force Base
Officers Club – Clovis, NM
Current whereabouts unknown

27



"Winter Scene"
Fremont Ellis (1897-1985)
Oil on masonite, 1930s, 20" x 24"
Carrie Tingley Hospital – Albuquerque, NM
Restored by NNDPA

29



"Navajo Rug Portfolio"
Louie Ewing (1908-1983)
Print serigraph (silkscreen), No 8 and No 11
Ca. 1935-39 Part of collection of 200 silkscreen
print sets made featuring 15 Navajo blankets in
the Laboratory of Anthropology Collection in
Santa Fe. Displayed at multiple sites in NM.

30



"Tin Chandelier" 1930s
Edward Delgado (1883-1966)
National Park Service Office – Santa Fe

28



"Butterfield Mail"
(First Mail Crossing, Raton Pass)
Joseph Fleck (1893-1977)
Oil on canvas, 1936
Raton Post Office – Raton, NM

31



"Unloading Mail at Raton"
Joseph Fleck (1893-1977)
Oil on canvas, 1936
Raton Post Office – Raton, NM

32



"Five Mile Park"
New Deal Bathhouse & Swimming Pool, 1930s
Also known as "Metropolitan Park"
Tucumcari, NM

33



"Landscape"
Victor Higgins (1884-1949)
Watercolor, ca. 1934, 23" x 31"
National Park Service Office – Santa Fe, NM

37



"Native American Pottery"
(Two pieces on each side)
(Middle piece by Maria Martinez)
Lela Gutierrez (1878-1966) Santa Clara Potter, 1930s
Maria Martinez (1886-1980) 1930s
National Park Service Office – Santa Fe, NM
This building is also a New Deal creation

34



35

"Enchanted Mesa"
Albert J. Groll (1866-1952)
Oil on canvas, 1930s, 29.5" x 50"
Octavia Fellin Public Library – Gallup, NM



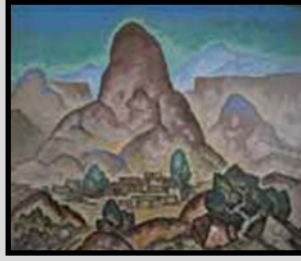
"Curry County Courthouse"
New Deal Building, Built in 1936
Clovis, NM

36



38

“Acoma Trail”
William P. Henderson (1877-1943)
Mural, Oil on canvas, 1938
U.S. Federal Courthouse – Santa Fe, NM



39

“Cabezon”
William P. Henderson (1877-1943)
Mural, Oil on canvas, 1938
U.S. Federal Courthouse – Santa Fe, NM



40

“Taos Mountain”
William P. Henderson (1877-1943)
Mural, Oil on canvas, 1938
U.S. Federal Courthouse – Santa Fe, NM



“Across the Valley” 41
E. Martin Hennings (1886-1956)
Oil, 1930s
Dexter Public Schools – Dexter, NM



42

“Buffalo Roundup”
Velino Shije Herrera (Ma-Pe-Wi) (1902-1973)
Oil on canvas, 1930s
Santa Fe US Indian School – Santa Fe, NM
Photo by Lee Marmon



56

“Cottonwood Tree”
D. Paul Jones (Died 1962)
Oil on canvas, Ca. 1930s
NM Tech University,
Skeen Library – Socorro, NM



44

“Moses, The Law Giver” **“Moses El Legislador”**
Victor Higgins (1884-1949)
Fresco, 5' x 4' (approx.)
Old Taos Courthouse on the Plaza – Taos, NM



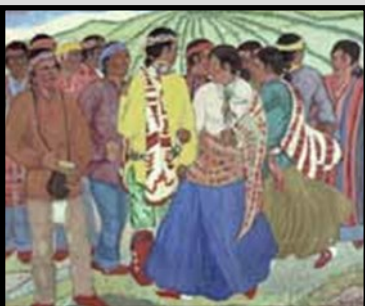
45

“Cowboys and Indians”
Nils Hogner (1893-1970)
Oil on canvas, 1930s, 38” x 44”
Eastern NM Univ. Music Building
Portales, NM



46

“Untitled”
Nils Hogner (1893-1970)
Oil on canvas, 1934, 38” x 44”
Eastern NM Univ. Music Building
Portales, NM



47

“Untitled”
Nils Hogner (1893-1970)
Oil on canvas, 1934, 38” x 44”
Eastern NM Univ. Music Building
Portales, NM



48

“The Chino Mine”
Ted Van Soelen
Grant County Courthouse
Silver City, NM



49

“Apache Crown Dance”
Allan Houser (1914-1994)
Watercolor, 1935
Octavia Fellin Public Library
Gallup, NM



“Girls on Teeter-Totter”
 Odon Hullenkremer (1888-1978)
 Oil, 1930s
 Carrie Tingley Hospital
 Albuquerque, NM

50



“Boy in Helmet”
 Odon Hullenkremer (1888-1978)
 Oil on masonite, 1935, 15.6” x 19.6”
 Carrie Tingley Hospital – Albuquerque, NM

51

“Blaze and Buckskin”
 Walter Ufer (1876-1936)
 Oil on canvas, 1934, 25” x 29.5”
 UNM Fine Arts Museum
 Albuquerque, NM



52



55

“The Founding of San Juan, The First Capital of New Spain”
 AD. Paul Jones (Died 1962)
 Triptych Oil Painting, 1930s
 Northern NM Community College – El Rito, NM
 Restored by NNDPA



“The Last Frontier”
 Russell Vernon Hunter (1900-1955)
 Mural, Oil on canvas, three panels, 1934
 De Baca County Courthouse – Ft. Sumner, NM

53



102



115



54



“A Cycle of Science: Art”
 Raymond Jonson (1891-1982)
 Oil on canvas, 1936
 Eastern NM University Golden Library
 Portales, NM
 (One of six murals in a series encompassing
 various aspects of science)
 Restored by NNDPA

57



“A Cycle of Science: Chemistry”
 Raymond Jonson (1891-1982)
 Oil on canvas, 1936, 80” x 37”
 Raymond Jonson Gallery – Albuquerque, NM
 (One of six murals in a series encompassing
 various aspects of science)

58



“The Rain Priest”
 Gene Kloss (1903-1996)
 (Alice Geneva Glasier Kloss)
 Oil, 1930s, 36” x 48”
 Albuquerque Museum –
 Albuquerque, NM

59



60

“Winter Mass”
 Gene Kloss (1903-1996)
 (Alice Geneva Glasier Kloss)
 Etching, 1934, 20” x 26”
 One of nine original etchings created
 in 1934. 200 reproductions were
 distributed primarily to public
 schools and museums across NM –
 (Many are missing)



61

“Mercy”
Oliver LaGrone (1906-1995)
Sculpture, 1935, Bronzed 1993
Carrie Tingley Hospital and
Albuquerque Museum – NM



62

“Church in the Rio Grande Valley”
Paul Lantz (1908-1998)
Oil Painting, 1930s
McKinley County Courthouse – Gallup, NM



63

“Clovis Main Street”
Paul Lantz (1908-1998)
Mural, Oil on canvas, 1930s
Former US Post Office,
now a private office – Clovis, NM



64

“Conquistadores”
Tom Lea (1907-2001)
Mural, Oil on canvas, ca. 1933-34, 4.5’ x 10’
NM State Univ. Branson Library – Las Cruces, NM
(One of two large murals)

Both murals restored by NNDPA



65

“Old Mesilla”
Tom Lea (1907-2001)
Mural, Oil on canvas, ca. 1933-34, 4.5’ x 10’
NM State Univ. Branson Library – Las Cruces, NM
(One of two large murals)



66

“NM Ethnic and Fairy Tale Children”
Gisella Loeffler (1900-1969)
Distemper glue size paint with gold leaf on calendared
paperboard (hemostote), 1939, 71” x 131” x.5,”
One of two large works (restored) at
Carrie Tingley Hospital – Albuquerque, NM



67

“Superfluous Laws Oppress”
Ward Lockwood (1894-1963)
Former Taos County Courthouse
One of 10 New Deal murals



75

“Nativity Scene and Ethnic Children”
Gisella Loeffler (1900-1969)
Distemper glue size paint with gold leaf on calendared
paperboard (hemostote), 1939, 71” x 131” x.5,”
One of two large works (restored) at
Carrie Tingley Hospital – Albuquerque, NM



71

“Antelope”
Ila McAfee (1897-1995)
Oil on canvas, 1930s, 36” x 41”
The Albuquerque Museum from ABQ.
High School Collection – Albuquerque



“Boy”

68

“Girl”

69

Hannah Mecklem Small Ludins (1903-1942)
Stone sculpture, ca. 1933
Santa Fe Main Public Library – Santa Fe, NM



70

“Anglo Village”
William Lumpkins (1909-2000)
Watercolor, ca 1933, 26” x 33.25”
NM Museum of Fine Arts Collection – Santa Fe,
NM One of a series of three – “Hispanic Village” and
“Indian Village” are the other two. Photo by Blair Clark



“Bison” 72
Ila McAfee (1897-1995)
Oil on canvas, 1930s
City-County Chambers Auditorium
Albuquerque, NM Restored by NNDPA



“Allegory – History of the Gallup Region” 73
Lloyd Moylan (1893-1963)
Oil on plaster, 1940, 2000 sq.ft.
McKinley County Courtroom – Gallup, NM
(Two other large murals by this same artist can be found in the Administration Bldg at Highlands Univ in Las Vegas, NM and Eastern NM Univ. Administration Bldg. – Portales, NM)



“Eagle Dance” 74
Lloyd Moylan (1893-1963) Oil, 1930s
Kirtland Officers Club – Albuquerque, NM
Restored by NNDPA



“Dinner” 77
Lloyd Moylan (1893-1963)
Etching, 1930s
McKinley County Courthouse – Gallup, NM



“The 12th Chapter of Ecclesiastes” 78
Lloyd Moylan (1893-1963)
Mural, Oil (leached to look like fresco), ca. 1936
Eastern NM Univ. Administration Bldg. – Portales, NM
Restored by NNDPA



“The Rebellion of 1680” 79
Loren N. Mozley (1905-1989)
Mural (restored), Oil on canvas mounted on
plaster wall, 1936
U.S. Federal Courthouse – Albuquerque, NM



“Swimming and Tennis”
Willard Nash (1898-1943)
Oil on canvas, 1934, 80” x 37.3”
UNM Fine Arts Center
Albuquerque, NM
Restored by NNDPA

80



“Picuris Pueblo” 81
Helmuth Naumer (1907-1989)
Pastel, 1930s
Bandelier National Monument, NM

81



“The Dissemination of Education” 76
Lloyd Moylan (1893-1963) Mural, 1937
Admin. Bldg at Highlands Univ. – Las Vegas, NM
Two other large murals by this same artist can be found in the McKinley County Courthouse – Gallup, NM and Eastern NM Univ. Administration Bldg. – Portales, NM

76



“San Ildefonso Kiva” 82
Helmuth Naumer (1907-1989)
Pastel, 1930s
Bandelier National Monument, NM

82



“Rio en Medio” 84
Bror Julius Olsson (BJO) Nordfeldt (1878-1955)
Lithograph, 1930s, 10” x 13”
Melrose High School Library – Melrose, NM
(This is one of a series of six lithographs that were shared with public schools and many have “disappeared” or have yet to be located. The other titles include – Tres Ritos, Morada Santa Cruz, Canyon Road, Cerrillos, and Water Street)

84



“Mount Taylor” 83
Helmuth Naumer (1907-1989)
Pastel, 1930s
Originally at Clayton High School “WPA Museum”
Now at Herzstein Museum – Clayton, NM

83



“Windmill and Water Tank” 85
Max Ortiz (Dates unknown)
Oil, 1930s
Melrose Public Schools – Gallup, NM

85



"Aspens"
Gene Kloss (1903-1996)
McKinley County Courthouse – Gallup, NM

86



"Purple and Gold Iris"
Sheldon Parsons (1866-1943)
Oil on canvas, 1930s, 35" x 24"
Carrie Tingley Hospital –
Albuquerque, NM

87



"Santa Fe Fiesta"
Polia Pillin (1905-1992)
Watercolor
Originally in Clayton High School "WPA
Museum" – now in Herzstein Museum
Clayton, NM – Restored by NNDPA

88



"El Ontoño (Autumn)"
Eliseo Rodriguez (1915-2009)
Oil painting, 1930s
Dexter Consolidated Schools – Dexter, NM

89



**"Natural History of Plant and Animal Life and
the Cotton Industry and Farming"**
Olive Rush (1873-1966)
Fresco, 1934
NM State Univ. Biology Bldg. – Las Cruces, NM
(Mural painted over by maintenance staff to cover
up water damage, later restored to original fresco
by NNDPA)

90



"The Library Reaches the People"
Olive Rush (1873-1966)
Fresco, 1934
Fray Angelico Chavez History &
Photographic Library – Santa Fe, NM
Restored by NNDPA

91

"Our Lady of Sorrows"
Juan Sanchez (1911-1990)
Retablo, Paint on pine, 1930s,
8.25" x 6.25"
Museum of International Folk Art
– Santa Fe, NM



92



"Ochre Hills"
Howard Schleeter (1903-1976)
Oil, 1937
Clovis Community College
Clovis, NM

95



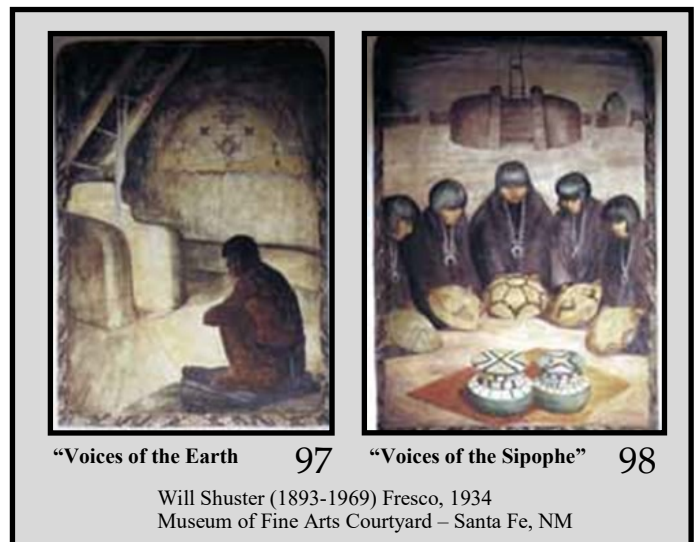
"Cowboy on Horseback"
Howard Schleeter (1903-1976)
Oil on masonite, 1937, 71" x 48"
Melrose High School Library – Melrose, NM
Restored by NNDPA

94



"Turtle Fountain"
Eugenie Shonnard (1886-1978)
Stone sculpture, Ca. 1936
New Mexico Veteran's Center – T or C, NM

96



"Voices of the Earth"

97

"Voices of the Sipophe"

98

Will Shuster (1893-1969) Fresco, 1934
Museum of Fine Arts Courtyard – Santa Fe, NM



“Buffalo Range”
Theodore Van Soelen (1890-1964)
Mural, Oil on canvas, 1938, 69.5” x 142”
Portales Post Office – Portales, NM

99



“Governor Greets the Tourist”
Pablita Verlarde (1918-2007)
Oil, Casein on masonite, ca. 1930
Bandelier National Monument, NM
(One of 84 art works created by this woman at this site).

101



“Family in Wagon”
Howard Schleeter (1903-1976)
Oil on Masonite, 1937
Melrose High School Library

93



“Deer Dancers”
Pablita Verlarde (1918-2006)
Casein painting, 1930s
Bandelier National Monument, NM

103



“Pole Climb”
Pablita Verlarde (1918-2007)
Watercolor painting, 1930s
Bandelier National Monument, NM

104



105

“Abstract”
Stuart Walker (1888-1940)
Watercolor, 1930s, 22”x 28”
Eastern NM University
Golden Library – Portales, NM



“Dancers”
William Warder (1920-1999)
Mural, Oil, 1930s
El Portal Hotel – Raton, NM
(Destroyed by fire, 2013)

106



“Taos Pueblo”
William Warder (1920-1999)
Mural, Oil, 1930s
El Portal Hotel – Raton, NM
(Destroyed by fire, 2013)

107



108

“Bored Cowboys”
Hal West (1902-1968)
Oil on canvas, 1930s, 12” x 10.25”
Melrose High School Library – Melrose, NM



109

“Get Down, Come In”
Hal West (1902-1968)
Oil on canvas, 1930s
Originally at Clayton High School
“WPA Museum” Now at Hertzstein
Museum – Clayton, NM



“Oklahoma Storm”
Hal West (1902-1968)
Watercolor, 1930s
Originally at Melrose High School Library

110



“Desert”
Brooks Willis (1903-1981)
Oil, 1930s
McKinley County Courthouse – Gallup, NM

111



“Pack Outfit – Hondo Canyon, NM”
Joseph Roy Willis (1876-1960)
Oil, 1930s
Patron’s Hall – Alamogordo, NM

112



“Zuni Pottery Making Women ” or “Grinding Corn”
Anna K. Wilton (1895-1982) Oil on canvas, 1930s
McKinley County Courthouse – Gallup, NM



“Men Building Furniture for Clayton Schools”
Clayton Craftsmen, 1930s
Vintage photo of WPA craftsmen at work. The buildings, furniture, landscaping, artwork and crafts were created and are still in use today.
Clayton High School – Clayton, NM
Photo from High School collection
Originally at Melrose High School Library

114



“Carved Animal Head Corbels”
New Deal Craftsmen, 1930s
Veterans’ Hospital, Building 1
Albuquerque, NM

116



121



118



122



119

“New Deal Creations”
Craftsmen of the WPA, 1930s
Vintage photos of WPA crafts made under the New Deal. These crafts are typical of the period. Created at Clayton High School and now on view in the Herzstein Museum.



120



“Raton Middle School”
New Deal Building, 1939
Former High School – Raton, NM

117



“Aztec Museum”
New Deal Building, 1936
Former City Hall – Aztec, NM

123



124

“Conchas Dam”
New Deal Builders/Craftsmen, 1930s
Vintage photo of Dam built by the New Deal
Conchas Dam Site, NM



125

“Navajo Rug Portfolio”
Louie Ewing (1908-1983)
Print serigraph (silkscreen), No. 8, Ca. 1935-39 Part of
collection of 200 silkscreen print sets made featuring 15
Navajo blankets in the Laboratory of Anthropology
Collection in Santa Fe. Displayed at multiple sites in NM.



126

Door in Clayton School



127

“The Round Up”
Theodore Van Soelen (1890-1964)
Grant County Courthouse – Silver City, NM



128

“Albuquerque Little Theater” “Los Morros” Mural
by Dorothy Stewart,
Destroyed in remodel of building

NNDPA New Deal FSA Photo Exhibit

New Deal Photographers of the Farm Security Admin. (FSA), 1930s



Blas Chavez & Family FSA-1
in Northern NM
John Collier, Jr.



"Mrs. Maclovía Lopez & Family in Trampas, NM" FSA-1a
John Collier, Jr.



Dentist in Northern New Mexico
John Collier, Jr. FSA-2



Mother & Child with Baby Bottle
Dorothea Lange FSA-3



Family Traveling/Resting
Dorothea Lange FSA-4a



Dust Bowl Farm – Still Occupied
Dorothea Lange FSA-5



Migrant Mother with two of her children
Dorothea Lange FSA-6



Unemployment Aid – First Week Applicants
Dorothea Lange FSA-7



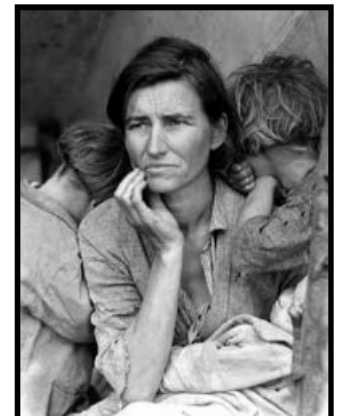
Towards Los Angeles FSA-8
Dorothea Lange



Mother and Baby in Truck FSA-9
Dorothea Lange



Father and Son on Tractor in Claud, NM
Dorothea Lange FSA-10



The Migrant Mother FSA-11
Dorothea Lange



Father and Sons in Field FSA-12
Dorothea Lange



Migrant Worker with Infant
Dorothea Lange FSA-13



FSA-14

Young Boy and Girl from Oklahoma
Dorothea Lange



Girl on Trunk – Bosque Farms
Dorothea Lange FSA-15



Gas Price Breakdown FSA-16
Dorothea Lange



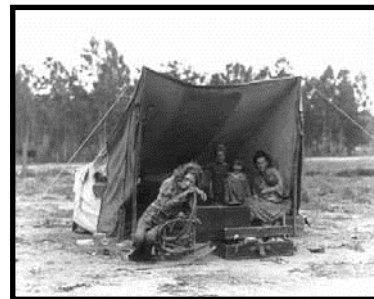
Farm Equipment Auction FSA-17
Dorothea Lange



Workers in Field Cutting Lettuce
Dorothea Lange FSA-18



Making Adobe Bricks FSA-19
Dorothea Lange



Migrant Mother in Tent – One Daughter Outside Tent FSA-20
Dorothea Lange



Young Girl Resettled from Taos FSA-21
Dorothea Lange



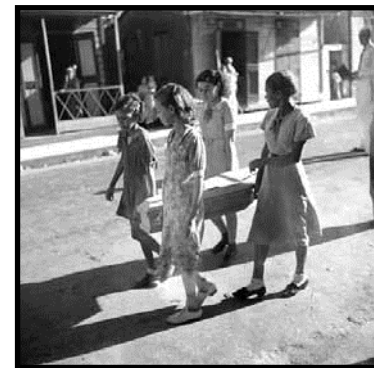
Man with Horses – A New Start in Bosque Farms FSA-22
Dorothea Lange



Tent Home in Community Camp FSA-23
Russell Lee



Christmas Dinner – Potatoes, Cabbage and Pie FSA-24
Russell Lee



Funeral of a child – Puerto Rico FSA-25
Edwin Roskam



Father and Sons Walking in the Face of a Dust Storm FSA-26
Arthur Rothstein



Two African American Children FSA-27
M. P. Wolcott



Sugar Worker taking a drink – Puerto Rico FSA-28
Edwin Roskam